



OLAF European Anti-fraud Office



What is OLAF

European Institutions'
independent
investigation service

Service Platform for its
national and Community
partners



Legal Basis

Articles
274 and 280
EC Treaty

Comm Decision
1999/352/EC,
ECSC, Euratom

Regulation (EC)
No 1073/1999

Institutional History

1988 – creation of predecessor UCLAF

1999, 1 Jun – creation of OLAF

1999, 1 Aug – first Supervisory Committee

2000, 1 Mar – OLAF Director

2006, Feb – OLAF Director reappointed



Statistical Information

Budget



~ € **50 Mio** for the functioning of OLAF

~ € **12 Mio** for programmes and policies

Staff



~ **400** people working with OLAF

Profiles: magistrates, customs investigators, tax investigators, analysts auditors, etc.

Objectives + Tasks



fights against

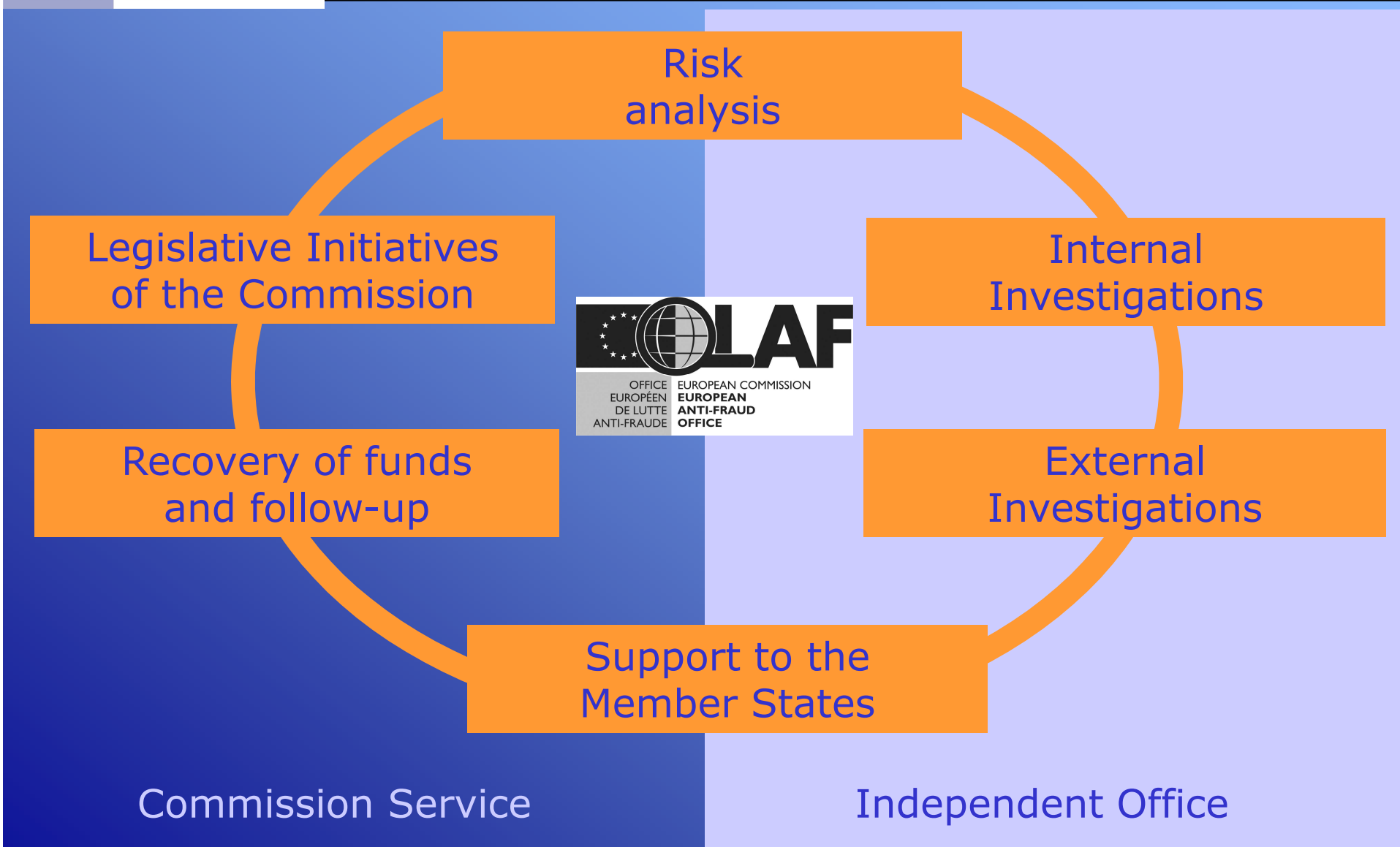
any illegal activity vs.
EU financial interests

serious wrongdoings
of EU staff

Corruption

Fraud

Fight against fraud + corruption



Independence

- **special independent status** in its operational and investigation functions
- Director may neither seek nor accept instructions from any Government or any institution,
- Director appointed by the Commission after consultations with Parliament and Council
- Director **opens investigations** of his own motion
- Director can bring an action against the Commission in the **Court of Justice**

- **Supervisory Committee** to reinforce the Office's independence

The Rule of Law

International Human Rights Instruments

European Community Law
+ Courts' rulings

National Law
+ Courts



OLAF Manual

OLAF has no judicial powers

Investigations



Legality

Integrity

Impartiality

Transparency

Rights
of the Individual

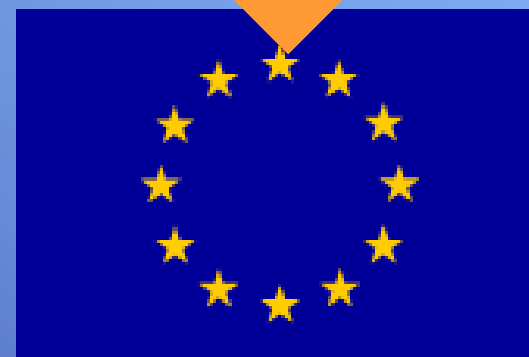
Internal investigations

Key area with a view to OLAF's independence

Administrative Investigations
in all European Union
Institutions, Offices, Agencies



OLAF has
no judicial powers



- Obligation to inform
- Obligation to cooperate

External investigations

OLAF cannot and may not fight EU-fraud alone:
80 % of the EU expenses are administered by the MS

➤ National law enforcement services are OLAF's key partners

cooperation is crucial:

- Own resources (smuggling)
- Common Agricultural Policy
- Structural Funds
- Indirect taxation



cooperation adds value:

- Pre-Accession Instruments (Phare)
- External action (development aid)
- Other direct expenditure (R&D)

OLAF has no
judicial powers

Investigation



OLAF's three-pronged structure

Investigations and Operations Directorates

- core activities
- Internal and external investigations
- Coordination of investigations and operations

Operational and Policy Support Directorate:

- Analyst support
- Technical support
- Legal support
- Mutual assistance
- prevention and follow-up

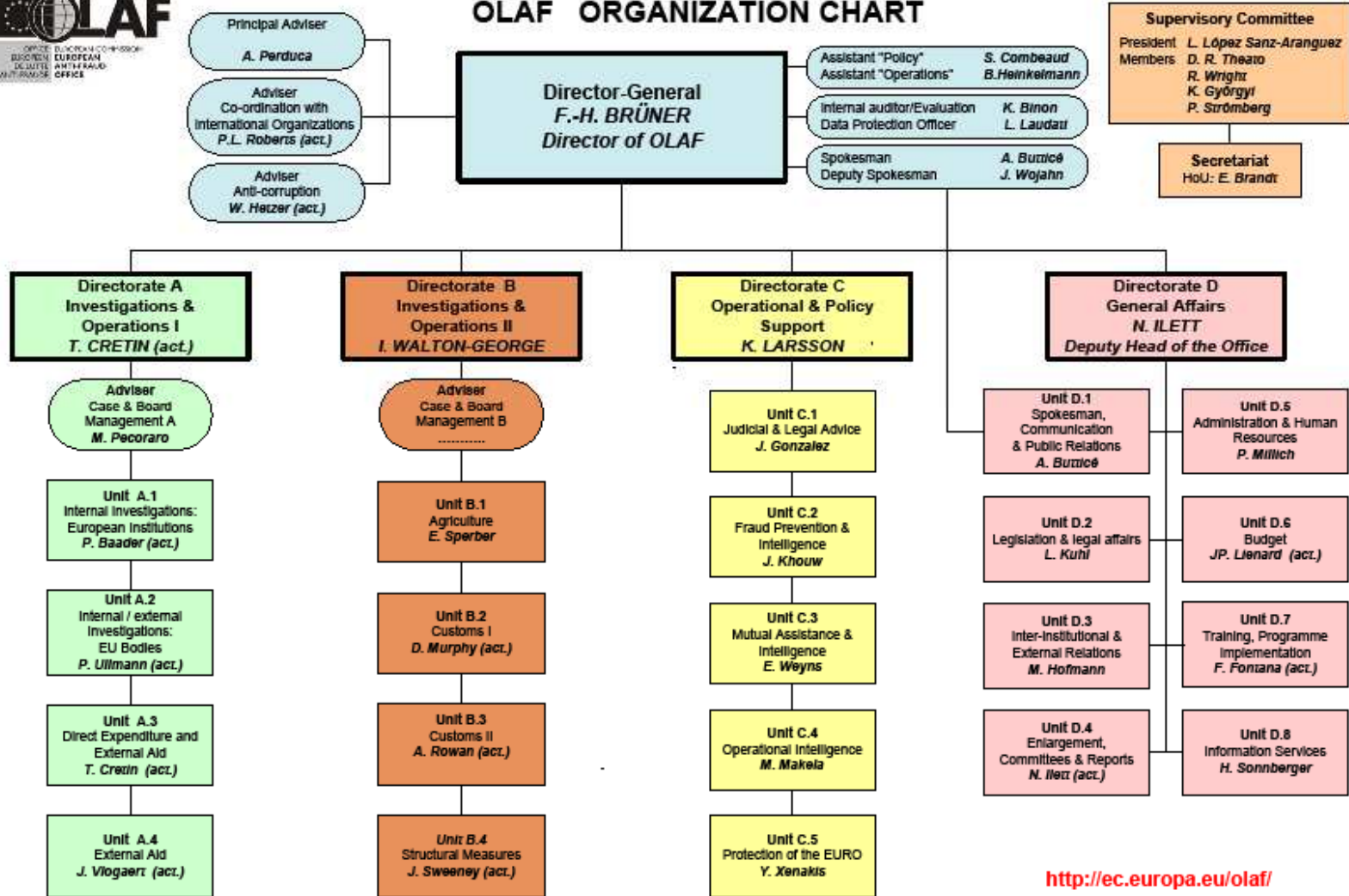
General Affairs Directorate:

- Legislation
- Communication
- Admin services

OLAF's Organisation chart



OLAF ORGANIZATION CHART



<http://ec.europa.eu/olaf/>

01/03/2006
Last edit on 01/03/2008

Contact data

European Anti-Fraud Office (OLAF)

European Commission

B-1049 Bruxelles

Belgique

olaf-courrier@ec.europa.eu

Fax: +32-2-296.08.53